



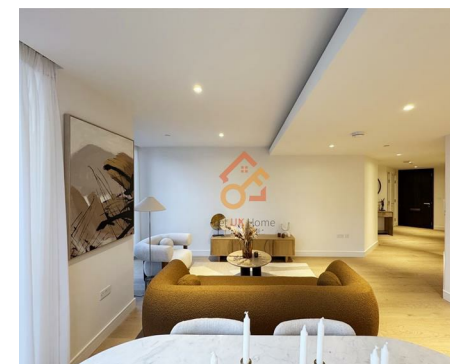
Let **UK** Home

2 Bedrooms

Flat

Located in London

£4,500 Per Month



info@letukhome.co.uk

<https://www.letukhome.co.uk/>

01795 358 886



Marsh Wall London

E14 9GS



Let UK Home are excited to offer this spectacular two-bedroom apartment in the heart of Harcourt Tower, part of the South Quay Plaza, in Canary Wharf.

The flat comprises a spacious open kitchen, a stylishly dining room, a magnificent living room, two bright bedrooms with built-in wardrobes and ensembles, and one toilet room. A virtual viewing is provided.

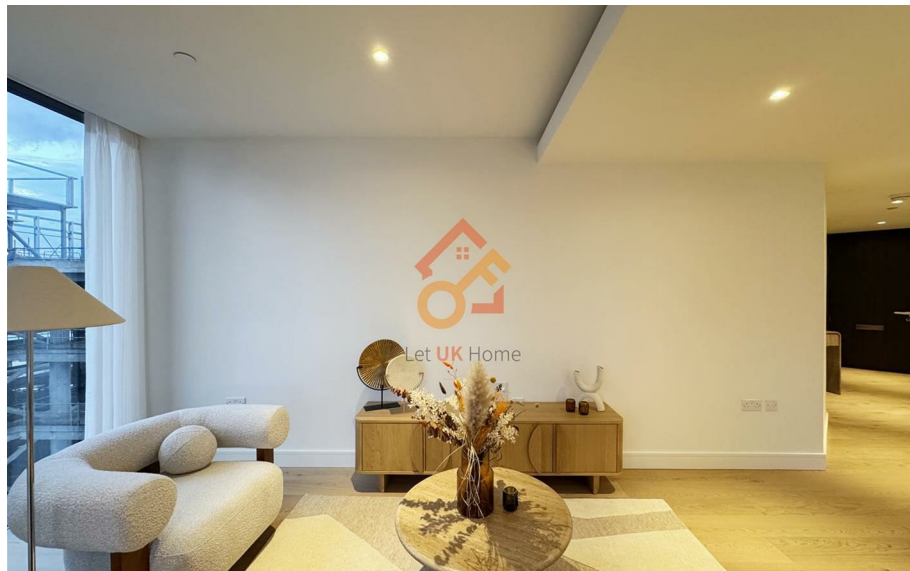
The apartment will provide concierge service, a leisure and wellness center and a fitness center (with an outdoor hot tub), an advanced shared workspace, supporting conference rooms and outdoor work areas, a game room with an independent soundproof karaoke room, a 20-meter swimming pool, a 56th-floor bar and lounge, and a terrace. It is worth mentioning that the 56th-floor bar is one of the highest residential bars in Europe. Residents can overlook Canary Wharf, the Thames, the City of London, etc., and enjoy a beautiful panoramic view.

Harcourt Tower is located in the heart of Canary Wharf. Canary Wharf has a beautiful environment, with multiple parks and cool blue riverside spaces, a total of 2.6 acres of green place, and complete supporting facilities for life, such as many internationally renowned hotels and more than 280 shops, cafes, bars, and restaurants. It is a shopping paradise, with everything from well-known brand stores, commercial streets to shopping malls. There are also many well-known cultural attractions near Canary Wharf, such as Tower Bridge, Royal Observatory and National Maritime Museum. In addition, there are many art centers, museums and theaters in the area, such as Canary Wharf Arts Centre, Museum of London and Royal Institute of British Architects.

Marsh Wall London

£4,500 Per Month

- 15th Floor
- Residents Lounge
- Swimming Pool
- Cinema & Game Room
- Virtual Tour Available
- Concierge Service & 24h Security
- The Gym & The Spa
- Co-working Space
- Sauna & Steam Room
- EPC Rating: B



两室公寓
2A户型



RENTAL SUPPLY IMAGE

2A户型—设计所有楼层

厨房/起居室/餐厅	16'0" x 19'0"	5.07m x 6.01m
卧室 1	9'0" x 20'0"	2.91m x 6.13m
卧室 2	9'0" x 19'0"	2.89m x 6.04m
室内总面积	976 平方英尺	90.71 平方米

关键信息

●● 厨房/浴室 C 厨房/浴室 W 卫生间

此户型图仅供参考，并非按比例。房产测量的面积和大小可能会有差异。所有测量的数据均在 5% 的公差范围内。



Let **UK** Home

3F 2 Eastbourne Terrace
Paddington
London
W2 6LG

01795 358 886

info@letukhome.co.uk

Council Tax Band: F

Local Authority:

Agents Note: Whilst every care has been taken to prepare these particulars, they are for guidance purposes only. All measurements are approximate and are for general guidance purposes only and whilst every care has been taken to ensure their accuracy, they should not be relied upon and potential buyers/tenants are advised to recheck the measurements.

Energy Efficiency Rating		Current	Potential
Very energy efficient - lower running costs			
(92 plus) A			
(81-91) B		85	85
(69-80) C			
(55-68) D			
(39-54) E			
(21-38) F			
(1-20) G			
Not energy efficient - higher running costs			
England & Wales	EU Directive 2002/91/EC		

<https://www.letukhome.co.uk/>